



II COPA DEL MEDITERRÁNEO PUERTO PORTALS Club de Regatas Puerto Portals

SAILING INSTRUCTIONS

1. ORGANISING AUTHORITY

The Organising Authority (OA) is the Club de Regatas Puerto Portals in association with the International Dragon Association, the Spanish Dragon Class Association and the Federación Balear de Vela.

2. RULES

2.1 The sailing race will be governed by:

- a) The Racing Rules as defined in the World Sailing Racing Rules of Sailing 2017-2020 (RRS)
- b) The Prescriptions of the RFEV available on [Http: //rfev.es/ default/reglamentos/index](http://rfev.es/default/reglamentos/index)
- c) Appendix P will apply.

2.2 The measurement regulations delivered upon registration.

2.3 The prescriptions of the National Authority that will apply will be notified on the Official Notice Board

2.4 In the event of conflict between the notice of race and the sailing instructions, the sailing instructions will prevail (this change RRS 63.7).

3. NOTICES TO COMPETITORS

Notices to competitors will be posted on the official notice board located near the Race Office that will be located in LA CONCHA, local nº 62

4. CHANGES TO SAILING INSTRUCTIONS

Any change to the sailing instructions will be posted at least two hours before the 1st scheduled warning signal for the first race of the day on the day it will take effect, except that any change to the schedule of races will be posted before 20.00 on the day before it will take effect.

5. SIGNALS MADE ASHORE

5.1 Signals made ashore will be displayed at the signal mast at mooring berth area. The mast will display Puerto Portals colours/logo on a white flag.

5.2 When flag AP is displayed ashore, '1 minute' is replaced with 'not less than 60 minutes in the race signal AP. Boats are requested no to leave the harbour until Flag AP is lowered. This changes race signal AP.



6. SCHEDULE

6.1 Registration:

Registration will take place from Thursday, April the 12th from 09.00 to 19.00 hrs to Friday, April the 13th from 09.00 to 10.00 hrs.

6.2 Dates of racing:

Day	Date	Time	Event
Thursday	12 April	09.00 – 19.00	Register of participants
		15.00 – 18.00	Weight control
Friday	13 April	09.00-10.00	Weight control
		10.00	Skippers meeting
		12.00	1 st Warning signal
Saturday	14 April	12.00	1 st warning signal
Sunday	15 April	12.00	1 st warning signal

6.3 Number of races:

8 races are scheduled and no more than 3 races shall be raced on per day.

6.4 On Sunday the 15th, no warning signal will be made after 15.30 hrs

6.5 The Race Committee reserves the right to change times in Schedule 6.2

7. RACING AREAS

Attachment A shows the location of racing areas.

8. THE COURSES

8.1 The courses will be windward-leeward. The diagrams in Attachment B shows the courses, including the order in which marks are to be passed, and the side on which each mark is to be left.

8.2 No later than the warning signal, the race committee signal boat will display the approximate compass bearing.

8.3 When there is a gate, boats shall sail between the gate marks from the direction of the previous mark and round either gate mark.

8.4 The race will not be shortened before the end of the leg to Mark 1 for the second time. This changes Rule 32.

9. MARKS

9.1 Marks 1, 2 and 3s/3p will be red colour.

9.2 New marks, after changing the course, will be yellow.

9.5 Class flag will be white with Dragon Class logo in blue.

10. THE START

10.1 The starting line will be between a staff on the race committee boat displaying orange flag on the starting starboard end of the starting line and a yellow mark on the port end of the starting line. The orange flag will be displayed at least 5 minutes before the warning signal.



10.2 Races will be started by using rule 26.

10.3 A boat starting later than 5 minutes after her starting signal will be scored Did Not Start. This changes rule A4.

10.4 The race committee boats on, or in the vicinity of the starting line may maintain their position by using their engine(s) and failure to keep clear of these boats shall not be grounds for redress under rule 62.1(a).

11. CHANGE OF THE NEXT LEG OF THE COURSE

11.1 To change the next leg of the course, the race committee will lay a new yellow mark and remove the original mark as soon as practicable. When in a subsequent change a new mark is replaced, it will be replaced by the original ones.

11.2 If a change of course is made to marks 3 G these will be the original ones. In case there is only 1 mark boats must leave the mark to port side.

11.3 Except at a gate, boats shall pass between the race committee boat signalling the change of the next leg and the nearby mark, leaving the mark to port and the race committee boat to starboard. This changes rule 28.1.

12. THE FINISH

12.1 The finishing line will be between a staff on the Race Committee boat displaying a blue flag and a yellow mark.

12.2 If the race committee, at the finishing position have displayed code flag "AP" over "A", this means that No more racing today.

13. PENALTY SYSTEM

13.1 A boat that has taken a penalty or retired under RRS 31 or 44.1 shall complete an acknowledgement form at the race office within the protest time limit.

13.2 Appendix P shall apply. Rule P2.3 will not apply and rule P2.2 is changed so that it will apply to any penalty after the first one.

14. TIME LIMITS

14.1 The time limit is 75 minutes from the valid start,

14.2 Boats failing to finish within 15 minutes after the first boat finishes, will be scored did not finish. This changes rules 35 and A4.2.

14.3 If no yacht has passed mark 1 for the first time within 30 minutes of the start, the race will be abandoned.

15. PROTESTS AND REQUESTS FOR REDRESS

15.1 A boat intending to protest must inform the race committee finish boat immediately after finishing. If the protester does not finish the race he shall inform the Race Committee Boat as soon as possible or the Race Office and immediately after arriving ashore.

15.2 Protest forms are available at the race office. Protests shall be delivered there within the protest time limit.



15.3 The protest time limit is 60 minutes after the last boat has finished the last race of the day. This time will be posted on the official notice board. The same protest time applies to all protests by the race committee and jury and requests for redress. This changes Rule 61.3 and 62.2

15.4 Notices will be posted within 15 minutes of the protest time limit to inform competitors of hearings in which they are parties or named as witnesses. Hearings will be held in the jury room, located at CNC facilities, beginning as soon as possible.

15.5 Notice of protest by the race committee or jury will be posted to inform yachts under rule 61.1(b). By the display of such notice, competitors shall be considered adequately informed of a protest by the race committee or the jury.

15.6 If a member of the Jury, afloat on the course, witnesses a breach of the rules, he shall indicate with a whistle and by waving code flag U that he expects a protest to be made by a competitor. If no penalty is taken or no protest lodged by a competitor, the Jury may protest one or more boats.

Action or no action by the Jury shall not be grounds for redress. This changes RRS 62.1 (a)

15.7 For the purposes of rule 64.3(b) the "authority responsible" is the Measurer or Equipment Inspector appointed by the organising authority.

15.8 Breaches of instructions 13.1, 17, 18, 20, 21, 22, 23, 24 and 27 will not be grounds for a protest by a boat. This changes Rule 60.1(a). Penalties for these breaches or breaches of Class Rules may be less than disqualification if the jury so decides.

15.9 On the last day of a regatta a request for reopening a hearing shall be delivered:

(i) Within the protest time limit if the party requesting reopening was informed of the decision on the previous day.

(ii) no later than 30 minutes after the party requesting reopening was informed of the decision on that day.

(iii) On the last day, within 30 minutes after the abandonment signal is displayed if racing is abandoned ashore, or within 120 minutes after the abandonment signal is displayed if abandoned afloat This changes RRS 66.

Decisions of the International Jury will be final as provided in RRS 70.5

16. SCORING

16.1 2 races are required to be completed to constitute a series.

16.2 Discards

(a) When 4 races or fewer have been completed, a boat's series score will be the total of her race scores.

(b) When more than 4 races have been completed, a yacht's series score will be the total of her race scores excluding her worst score.

(c) If less than 2 races can be sailed the trophy shall not be awarded.

16.3 Prizes will be given as stated in the Notice of Race

17. SAFETY REGULATIONS

A boat that retires from a race shall notify the race committee as soon as possible.



18. REPLACEMENT OF CREW OR EQUIPMENT

18.1 Substitution of competitors will not be allowed without prior written approval of the jury.

18.2 Substitution of damaged or lost equipment will not be allowed unless approved by the race committee. Requests for substitution shall be made to the committee at the first reasonable opportunity.

19. EQUIPMENT AND MEASUREMENT CHECKS

19.1 A boat or equipment may be inspected at any time for compliance with the class rules and sailing instructions. On the water, a boat can be instructed by a member of the technical committee to proceed immediately to a designated area for inspection.

20. SUPPORT BOATS

20.1 Support boats (which term shall include coach, press, private and spectator boats) shall register at the Race Office during the registration period (SI 5.1), such flag to be worn at all times when afloat. The person in charge of the competing boat to which support boats are attached shall acknowledge the presence of a support boat on his registration form and pay any fee for the support boat decided by the OA.

20.2 Subject to SI 21.6, team leaders, coaches and other support boats shall stay more than 100 metres to leeward of the starting line and from the leeward marks and from any racing Dragon from the time of the preparatory signal until all boats have finished the last race of the day, or all races are abandoned. Support boats may be allowed up the course on one specified side only if special dispensation has been granted by the IDA (via application to the Jury) for reasons of safety, health, tourism, spectating, or sponsor's request. Such boats applying for dispensation may *not* have a coach or World Sailing (ISAF) category 3 sailor on board. Support boats that have been granted dispensation will be issued with a different colour flag to ordinary Support/Coach boats.

20.3 Any Support boats entering the restricted area or impeding a competitor shall be liable to a penalty imposed on their competing boat for breach of this SI.

20.4 Support boats shall not pass any information by any means whatsoever to competitors who are racing (RRS 41).

20.5 Communication by radio (including mobile phones) is prohibited between competitors and any Support boats. Support boats shall not communicate with or transfer goods or equipment to or from, their competing boats from the time of the preparatory signal until all boats have finished or the Race Committee signals a postponement, general recall or abandonment.

20.6 At all times, support boats shall comply with the directions given by the Race Committee. In particular this includes assisting with rescues when requested to do so.

20.7 Support boats must be on call on VHF Channel 72 at all times.

20.8 If coach or support boats are permitted Rule 21 must be referred to in the NOR. National Authorities may exempt any or all of the rules in section 21 for Category 2 (or lower) events.



20.9 Coach/support boats shall *not* tow competitors out to the race course (unless requested to by the Race Committee) and may only tow boats in after the last competitor has finished or retires from the last race of the day.

21. HAUL-OUT RESTRICTIONS

All yachts shall be afloat before the start of the first race on Friday the 13th and shall not be hauled out during the regatta except with prior written permission of the Jury and according to the terms set out by the Jury.

22. DIVING EQUIPMENT AND PLASTIC POOLS

Underwater breathing apparatus and plastic pools or their equivalent shall not be used around keel boats between the preparatory signal of the first race and the end of the regatta.

23. VHF RADIOS

Except in an emergency, a boat shall neither make nor receive radio transmissions whilst racing except those available to all boats. This restriction also applies to mobile telephones and smart phones.

The Race Committee may use VHF radio to communicate to the Fleet, including the starting area, countdown to the start, OCS bow/sail numbers (to be communicated at least 2 minutes after the start), general recalls, black flag DSQs and Postponements.

Failure to make these broadcasts or failure to hear them shall not constitute grounds for redress. This changes rule 62.1(a).

VHF Channel 72 will be used to communicate with competitors.

24. OFFICIAL BOATS

Official boats will be marked as follows:

Category	Flag
Race Committee Boats	Orange flag
Jury Boats	white flag with Jury
Technical committee	White flag with M
Press Boats	White flag with Press

25. DISCLAIMER OF LIABILITY

Competitors participate in the regatta entirely at their own risk. See rule 4, Decision to Race. The organizing authority will not accept any liability for material damage or personal injury or death sustained in conjunction with or prior to, during, or after the regatta.

26. INSURANCE

Each participating boat shall be insured with valid third-party liability insurance with a minimum cover of 1.500.000 € (one million five hundred thousand Euros) per event or



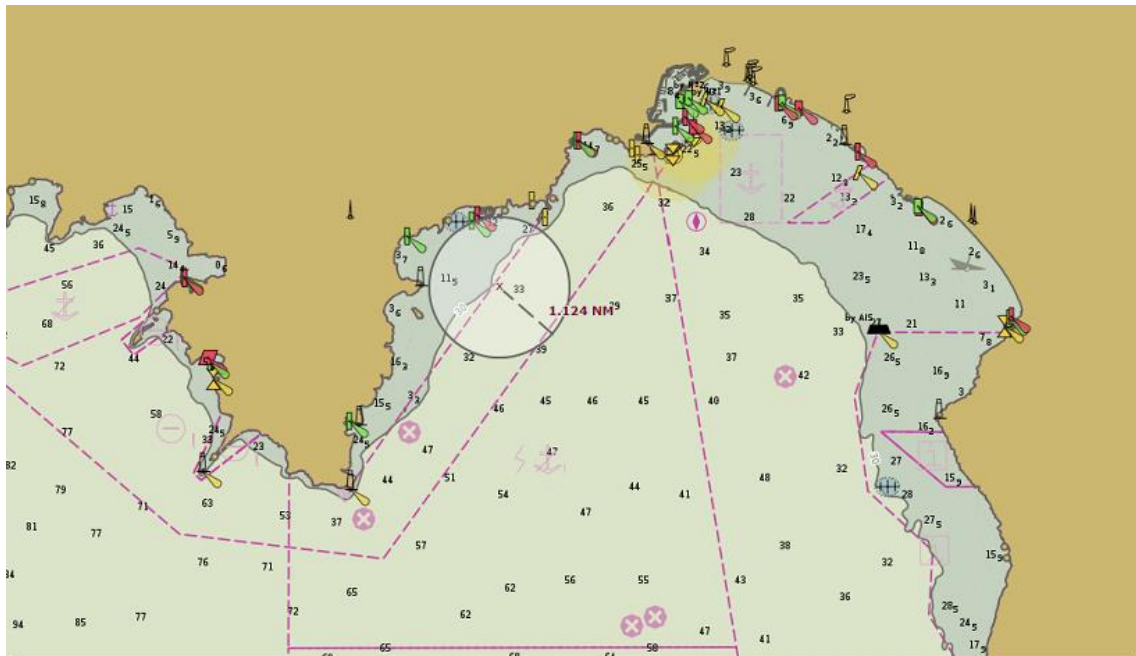
the equivalent. Competitors are advised to have their own personal accident insurance.

27. ADVERTISING

In accordance with Regulation 20.4.1 boats shall display sponsor advertising stickers supplied by the organizing authority.

28. ATTACHMENT A

RACING AREA





29. ATTACHMENT B

Course

All course marks shall be left to port, except marks 3G which shall comply with SI 8.3

Note: This drawing is schematic. The distances and mark positions are not to scale

